

- Standard Capacity: 25.000 LT/H (2.900 GAL/H)
- Standard Pressure: 200 BAR (2.900 PSI)
- Standard Power: 200 kW



HIGH-PRESSURE HOMOGENIZER  
H.P. PISTON PUMP

INNOVATIVE  
MANUFACTURING  
*Brand*

## Advantages

- High capacity at low RPM, saving energy
- Efficient homogenization
- Low maintenance costs
- Easy access for maintenance
- Hygienic and ergonomic desing
- Immediate spate parts availability
- Competitive pricing and on time delivers
- Pro-active competent customer service and support
- Suitable for abrasive and high viscosity products

## Options

- 2nd stage homogenizing head
- Plungers in ceramic
- Automation and remote control
- Digital pressure gauge
- Variable frequency drive (VFD)
- Inlet pressure gauge
- Aseptic and sanitary version
- ATEX Compliance
- cGMP support and certification

## APPLICATION

### Dairy



Milk, UHT Milk,  
Soy Milk, Oat Milk  
Yoghurt, Ayran  
Kefir  
Ice Cream  
Gelato

Labneh, Kashta  
Cream Cheese  
Mascarpone  
Desserts  
Milk Powder  
Spray Dried Products

### Food & Beverage



Fruit Juices  
Fruit Concentrate  
Aromas / Cloudifiers  
Food Emulsions  
Ketchup / Tomato Paste  
Margarine

Tahina  
Hummus  
Caramel Sauce  
Topping Sauce  
Dressing  
Peanut / Hazelnut Paste

### Chemicals and Petrochemical



Greas  
Lubricants  
Paraffin Emulsions  
Silicone Emulsions  
Wax Emulsions  
Mineral oil Emulsions

Polymer Suspensions  
Fungicides, Herbicides  
Latex  
Paint  
Detergents

### Cosmetics



Hair Products  
Beauty Creams  
Moisturizing Creams  
Lotion  
Shampoos  
Half Conditioners

Nail Polishes  
Lipsticks  
Toothpaste  
Collagen  
Perfume  
Waxes

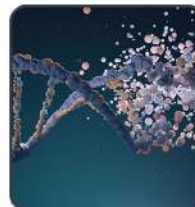
### Pharmaceuticals



Antibiotics  
Creams  
Antacids  
Tablet Coatings  
Liposomes  
Ointments

Syrups  
Vitamins  
Proteins  
Gels  
Vaccines

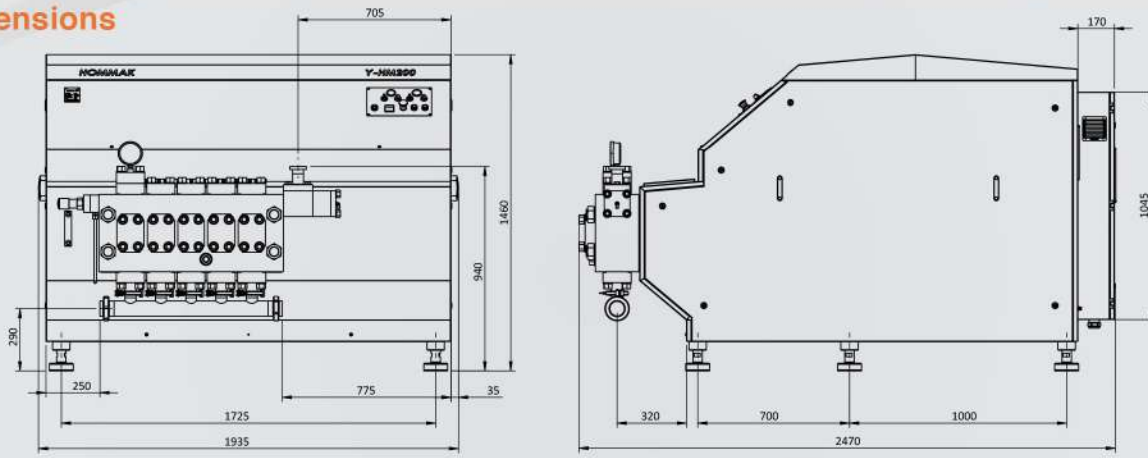
### Biotechnology



Proteins  
Yeast  
Vitamins  
Bacteria  
Enzymes  
Liposomes

Viruses  
Moss  
Probiotics  
Microorganisms  
Algae  
Celluloses

## Dimensions



LENGTH mm/in	WIDTH mm/in	HEIGHT mm/in	NET WEIGHT kg/lbs	GROSS WEIGHT kg/lbs	INLET / OUTLET
2470 / 97	1935 / 76	1460 / 57.5	5800 / 12786	6800 / 14991	DN100 / DN50

Measure in mm/in

## Compression Head

- Moonblock head formed by single forged block in high quality SS alloy
- 3-D CAD design, engineered using, FEM and CFD Analysis
- INNOTION function integrating technical R&D and technology focus.
- Surface Roughness: Ra<1.6µm, Ra<0.8µm, Ra<0.5µm (electropolished)
- Designed to avoid sharp edges and stress concentration
- Overpressure relief valve installed
- 10-year warranty against cracks and defects

## Homogenizing Valve

- Designed to be energy efficient with high stability
- Homogenization pressure pneumatic regulating system
- Tungsten carbide, cobalt carbide, Zirconium ceramic and silicon nitride, solid ceramic available as option

## Check Valves

- Mushroom and ball type in high wear resistant SS alloy
- Stellite and tungsten carbide materials available as option
- Designed symmetrically to be used twice-once on each time

## Pump Body (Gearbox)

- High resistant resin reinforced cast iron
- Heavy duty engineered and vibrationless
- AC motor drive through V belts and pulleys with integrated

## Frame

- Thick stainless-steel material is used for heavy load

## Plungers

- Chrome coated stainless-steel alloy
- Ceramic, HCR chromium and tungsten carbide coated as option
- Solid ceramic as option

## Sealing Components

- Long Lasting Food-grade hygienic material
- EPDM, NBR, FKM, PE, PTFE, ZEDEX, PEEK, TIVAR, Kevlar
- Available with FDA approval

## Technical Data

Motor Power	132 kW
Number of Plungers	5
Lubrication Oil ISO VG 150	65 L
Gear Reducer Oil ISO VG 320	27 L
Water Consumption	200 L

## Performance

Max. Capacity		Max. Pressure	
LTH	GAL/H	BAR	PSI
30000	7930	150	2200
25000	6600	200	2900
20000	5280	220	3200
15000	3960	300	4400
10000	2640	400	5800
7000	1850	500	7250
5000	1320	700	10100
2500	660	1000	14500
2000	530	1200	17400
1000	260	1600	23200

\*Special desing & manufacturing are made for different pressures & capacities.

